

TRUX

ACCESSORIES



MULTI-COLOR RGB AUXILIARY STAR LED INSTALLATION GUIDE (TLED-X1RGB / TLED-X3RGB)

Models: TLED-X1RGB / TLED-X3RGB

TLED-X1RGB



TLED-X3RGB

**CAUTION!**

These instructions are provided as a general guideline for use of the Smartphone Application & Accessories of the product. Additional mounting, wiring and/or weather seals may be required and are the responsibility of the installer. The installation of this product must be done professionally and the manufacturer assumes no responsibility for the integrity of the installation.

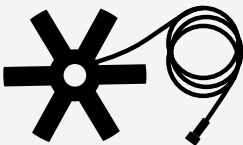
Please read the following instructions prior to using this product. Failure to follow these safety guidelines could result in damage to the product, vehicle and can even cause serious injury.

SAFETY GUIDE

Do not install or operate this product unless you have read and understood the following safety information.

1. Proper training and installation of this product is required in order to ensure the maintenance and safety of its use.
2. Take safety precautions when working with live electrical connections.
3. The result of improper wiring can lead to serious risk. If wires are not properly bonded and grounded, this could cause a fire hazard.
4. Install the controls of the product at a convenient location where the operator does not lose eye contact with the roadway.
5. It is important to NOT install the controls of this light or have any wires in the vicinity of an air bag or it's deployment as this can reduce the effectiveness of the air bag and cause serious injury or death.
6. It is the responsibility of the operator to determine where to mount and wire this product safely by referring to the vehicle's user manual.
7. Using the product via the Remote Control or Smartphone App while driving can result in serious injury or death.
8. The user is responsible for understanding and obeying all laws. The user must review all applicable city, state and federal laws and regulations before using this product. The manufacturer and distributor are NOT liable for any injury or penalty resulting from the use of this device.

INCLUDED:



2 x Star LEDs
(TLED-X1RGB Model Shown)



2 x Wire Harnesses
with Bluetooth Transmitter/Receiver



Remote Control
(Batteries Included)



Instructions

WIRING CONFIGURATION - FIGURE A



Professional Installation Required

SMARTPHONE APPLICATION INSTALLATION:

- 1) Download the "Tuya Smart" App by scanning the QR Code below (follow the onscreen instructions to download/install the Application from your Smartphone's "Store")
OR
Search for "Tuya Smart" in your smartphone's App Store then tap on the App to install.

Tuya Smart
Application



Scan QR Code
using your
Smartphone
Camera

- 2) Make sure that all wiring connections between the Star RGB LEDs & the Wire Harnesses are connected as per Figure A.
- 3) Launch the "Tuya Smart" App on your smartphone, then select the "Try as Guest" option on the "Log In" screen and press "Continue" when prompted.
NOTE: Certain features or functionalities may be limited as a guest user.
- 4) When the notification appears, give permission to the "Tuya Smart" App to "Find and Connect Devices on your local network" and proceed by granting permission to Bluetooth, unchecking the "Home Data Tick" option, and selecting "Continue."
NOTE: A window may appear on your smartphone requesting permission for the "Tuya Smart" App to access Bluetooth. To proceed, select "OK."
- 5) Turn On the RGB Star LEDs. Ensure that the LEDs enter "Bluetooth Pairing Mode" as indicated by the blinking white lights.
NOTE: If the RGB Star LEDs are not in Bluetooth Pairing Mode, quickly turn them off and on 3 times until the LEDs start blinking white.
Select "Add Device" in the "Tuya Smart" App. Once the RGB Star LEDs are discovered, click "Add" next to "Discovering Devices...". This will initiate the pairing process between the RGB Star LEDs and the "Tuya Smart" App. When paired successfully the RGB Star LEDs will stop blinking and emit a steady white glow.
- 6) On the "Add Device" screen of your Smartphone, the RGB Star LED will be shown as "TY_BEACON_5CH" with a green tick. Select "Done" at the bottom of the screen, which will take you to the control section of the "Tuya Smart" App.

Please proceed to the next page to explore the different functions available in the "Tuya Smart" App.

APPLICATION FUNCTIONS:

After successfully pairing with the RGB Star LEDs, explore the various functions of the "Tuya Smart" App as shown below.



COLOR FUNCTION:

Tap on the "Color Function" icon to access the Color Wheel for selecting a color. You can switch between RGB Colors and the White Spectrum by using the tab located at the top.



Color Spectrum Tab:
RGB or White Spectrum Colors.

Color Adjustment Wheel

Brightness Adjustment

Preset Colors:
Choose and create preset colors for instant selection and future use.

PATTERN FUNCTION:

Tap on the "Pattern Function" icon to access the 30 different Color Patterns and unique transitions.



Colorful

Good Night
Leisure
Soft
Dynamic
Grassland Green
Dazzling
Gorgeous
Night Light
Blue Sky



Ocean

Sunrise
Sunset
Ocean
Sunflower
Forest
Kung Fu
Candlelight
Dream
French Style



Mediterranean
Style

American Style
Birthday
Wedding Anniversary
Christmas
Diwali
Holi
Victory Day
Easter
Halloween



Independence
Day

MUSIC RHYTHM FUNCTION:

To access the Music Rhythm Function, tap on the "Music Rhythm" icon. Switch between "Local" or "App" modes by selecting the tab at the top.



Local Mode:

The RGB Star LEDs synchronize with the rhythm of the music captured by the smartphone's microphone.

NOTE: Ensure that the "Tuya Smart" App has been granted permission to access the Smartphone's Microphone.

Rhythm Presets: Passion, Happy, Soft, Brisk & Mobile

App Mode:

The RGB Star LEDs synchronize with the music captured by the smartphone's microphone.

NOTE: Ensure that the "Tuya Smart" App has been granted permission to access the Smartphone's Microphone.

Music Presets: Music, Game & Romantic

SCHEDULE FUNCTION:

Tap on the "Schedule" icon to access the scheduling function within the application.



Countdown Mode:

Set a Countdown Time for when the RGB Star LEDs will power off.

Schedule Mode:

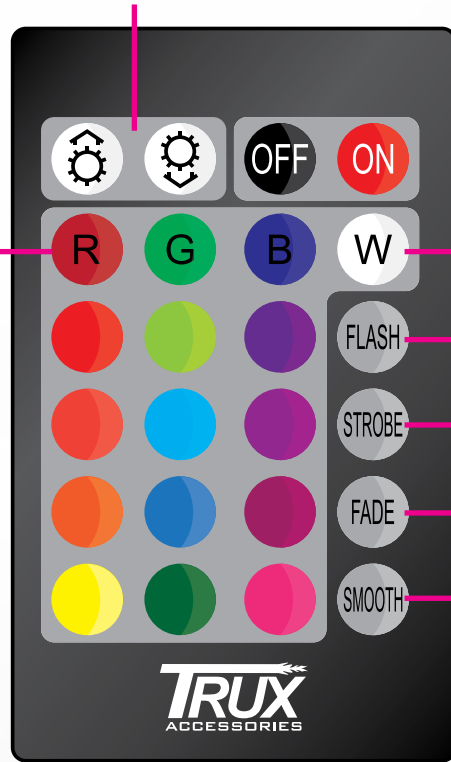
Configure a "Power On/Power Off" Schedule (aligned with the Smartphone's Timezone).

REMOTE CONTROL:

You can utilize the Remote Control even when the RGB Star LEDs are connected to the "Tuya Smart" App. Explore the various functions of the Remote Control as shown below.

Brightness Adjustment
(10 Brightness Levels)

RGB Preset Colors
(15 Preset Colors)



3 Color Selection Function

Flash Function

Strobe Function

Fade Function

Smooth Function

3 Color Selection Function:

Press the "W" Button to cycle through a selection of 3 Colors:
White, Amber, Warm White

Flash Function:

7 Color Transition Effect that cycles through:
Green, Blue, Amber, Cyan, Pink, Lilac and Red

Fade Function:

7 Color Fade On/Off Effect that cycles through:
Green, Blue, Amber, Cyan, Pink, Lilac and Red

Strobe Function:

7 Color Strobe Effect that cycles through:
Green, Blue, Amber, Cyan, Pink, Lilac and Red

Smooth Function:

7 Color Smooth Fade Effect that cycles through:
Green, Blue, Amber, Cyan, Pink, Lilac and Red

The Remote Control features "Last Color/Function Recall" for all functions: when the power is turned on, the previous Color or function reappears automatically.